

SYSTIME and Oracle Unveil Oracle's Application Integration Architecture Process Integration Packs for Oracle's Agile Product Lifecycle Management and Oracle's JD Edwards EnterpriseOne

Tuesday February 02, 2010 - 08:00 AM EST

[Business Wire News Releases](#)

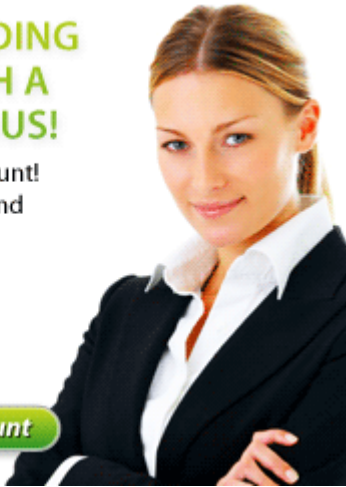
Released By [SYSTIME](#)

**START TRADING
FOREX WITH A
\$1000 BONUS!**

- Free Practice Account!
- No commissions and bottom spreads!
- Live news, charts and indicators!



Open Free Account



Share:



Rating:



SYSTIME:

- Further extending the value that Oracle Applications deliver to customers, SYSTIME and Oracle announced availability of an Oracle Application Integration Architecture (AIA) solution that connects Oracle's Agile Product Lifecycle Management (PLM) and Oracle's JD Edwards EnterpriseOne.
- The PLM Process Integration Pack enables rapid implementations of Oracle's best-in-class Agile PLM processes integrated to JD Edwards EnterpriseOne ERP. This integration helps JD Edwards customers reduce the cost and risk associated with typical third-party and custom PLM integrations.
- Developed in collaboration between Oracle and SYSTIME, the new integration is part of Oracle AIA, a comprehensive solution that delivers integrated business processes across Oracle, third party and custom applications.
- Since the launch of Oracle's AIA program, Oracle continues to see strong momentum across its partner ecosystem, with Systems Integrator (SI) partners, such as SYSTIME, making significant investments in strategic co-development efforts.
- These co-development efforts enable Oracle partners to obtain technical strength and insight for Oracle AIA through training, development participation and validation programs; and increased revenue opportunities with differentiated, low cost, fast pace and sustainable service offerings. Additionally Oracle is able to rapidly expand the number of AIA integrations available.
- SYSTIME is currently a Platinum Partner in the Oracle PartnerNetwork.

Pre-Integrated Offering Delivers Value

- Oracle AIA provides a pre-built integration between Agile PLM and JD Edwards EnterpriseOne to improve organizational transparency and streamline product innovation through better design making, accelerated manufacturing and an expedited time to market. Through this integration, customers benefit from:
 - **Pre-defined PLM transfer templates:** Predefined templates for design release of new

product definition and product launch, as well as change management of previously launched products.

- **Bi-directional data exchange:** Synchronization of engineering change status and material attribute information between manufacturing and PLM enables higher innovation efficiency.
- **Robust error-handling and notification framework.** The integration pack provides multiple layers of validation to ensure data exchanges are complete and properly formatted. All business rules within JD Edwards EnterpriseOne are also validated for every transaction. Exception handling ensures that unsuccessful transactions are rolled-back and email notifications are sent.
- **End-to-end Process monitoring.** Tracking and monitoring of the change process queue minimizes data exchange latency and ensures effective process completion.

Supporting Quotes

- “Working in close collaboration with dedicated partners like SYSTIME, we continue to leverage Oracle Application Integration Architecture (AIA) to extend the value of our customers’ investments,” said Oracle Group Vice President, JD Edwards, Lyle Ekdahl. “We appreciate SYSTIME for stepping up and embracing the early adoption of the AIA from a JD Edwards perspective. We chose SYSTIME due to their industry strength and specialization in Oracle’s enterprise suite of applications. The co-development of this integration will give JD Edwards EnterpriseOne customers new tools to drive product innovation and can also make the full design-to-release process more effective and efficient.”
- “We, here at SYSTIME are pleased that we had the opportunity to work with Oracle to develop this integration; the value of this integration product to customers is enormous, with great opportunities to streamline functional and technical work in product management, engineering and manufacturing. We also remove the ad hoc, point-to-point interfaces that existed in the past with a broader, more systematic, well supported mechanism that should support customer requirements very well for many years to come,” Ramesh Subramanian, Vice President of Global Services of SYSTIME.
- “It has been an honor for SYSTIME to work with Oracle to develop an integration between JD Edwards and Agile. SYSTIME’s acclaimed specialization in JD Edwards and Oracle’s Agile PLM tied in with many years of experience in Oracle solutions is the quintessential package for customers to accelerate time to market and optimize profitability,” says Vishal Grover, President and CEO of SYSTIME.

Supporting Resources

- [Oracle Partners Embrace Oracle Application Integration Architecture](#)
- [Oracle AIA for Partners](#)
- [Process Integration Packs](#)
- [AIA Blog](#)
- [Oracle’s Agile PLM Blog](#)
- [Oracle’s Agile PLM Twitter Feed](#)
- [Oracle Continues to Deliver End-to-End Business Process Integration on Oracle Application Integration Architecture](#)
- [Oracle PartnerNetwork](#)
- [SYSTIME](#)

About SYSTIME

SYSTIME, 100% subsidiary of CMS group is a leading global business and technology service provider, serving customers in 50 countries over the last 30 years. SYSTIME provides end-to-end services to its customers and has best in class people, tools, methodologies and global delivery centers. SYSTIME (an Oracle Platinum Partner) is a leader in the JD Edwards space and has been distinctly

recognized, year after year, for keeping its customers competitive and agile. Please visit our website at www.SYSTIME.net

About Oracle

Oracle ([NASDAQ: ORCL](http://www.nasdaq.com)) is the world's largest business software company. For more information about Oracle, please visit our Web site at <http://www.oracle.com>.

Trademarks

Oracle is a registered trademark of Oracle Corporation and/or its affiliates. Other names may be trademarks of their respective owners.

Contacts:

Oracle

Jessica Moore, 650-506-8741

jessica.moore@oracle.com

or

SYSTIME

Amy Adkins, 415-369-9900 ext 3307

aadkins@SYSTIME.net

Related Stocks:

[ORACLE](#)

[Print this story](#)

[Email this story](#)